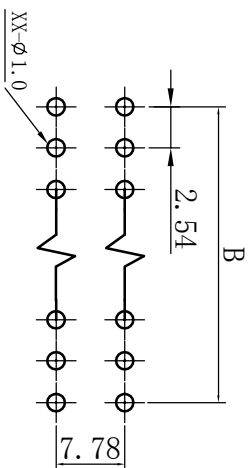
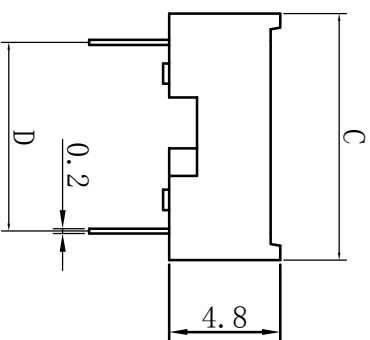
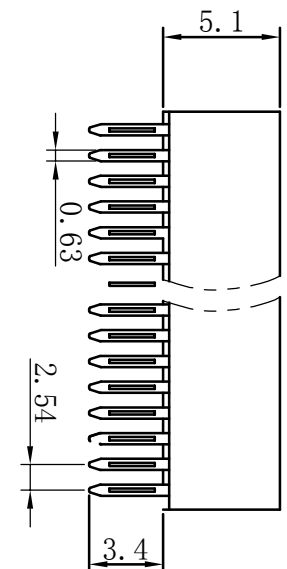
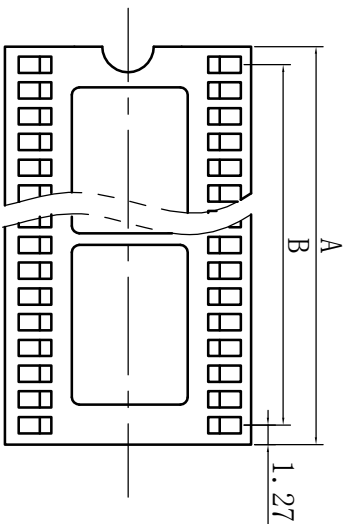


SPECIFICATIONS

Contact Resistance:
 Current Rating:
 Insulator Resistance:
 Operating Temperature:
 Contacts:
 Contacts Plating:
 Body:

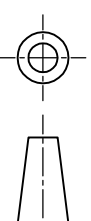
20 Millionohms max
 1amps
 1000 Megohms min. at 500 VDC
 -55° to +105° C
 Copper alloy
 Tin plating
 Glass Fiber reinforced Polybutylene
 Terephthalate (PBT) UL94V-0 rated
 UNSPECIFIED TOLERANCE: ±0.30



Contacts Per Row	A	B	C	D
2*3	7.62	5.08		
2*4	10.16	7.62		
2*7	17.78	15.24		
2*9	22.86	20.32	10.02	7.62
2*10	25.4	22.86		
2*11	27.94	25.4		
2*14	35.56	33.02		
2*16	40.64	38.10		
2*11	27.94	25.40	12.56	10.16
2*12	30.48	27.94		
2*14	35.56	33.02		
2*18	45.72	43.18		
2*19	48.26	45.72	17.63	15.24
2*20	50.80	48.26		
2*24	60.96	58.42		
2*28	71.12	68.58		

IC SOCKET PITCH:2.54mm 宽体

Customer: Approval: Unit Scale Date
 Drawing No: Check: mm 13.09.10



P/NO:
 Pin Longer:
 Signatuer:

深圳市永连旺电子有限公司