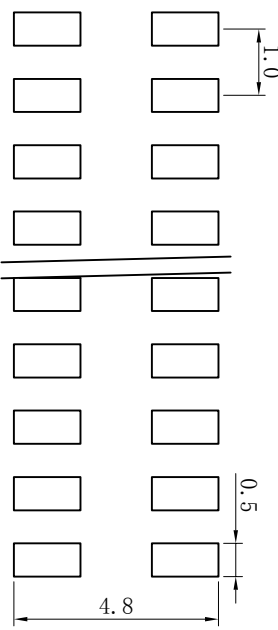
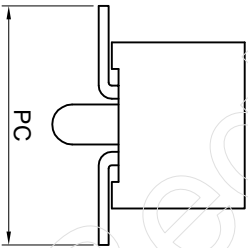
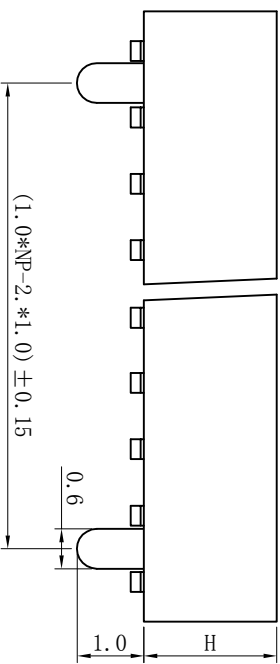
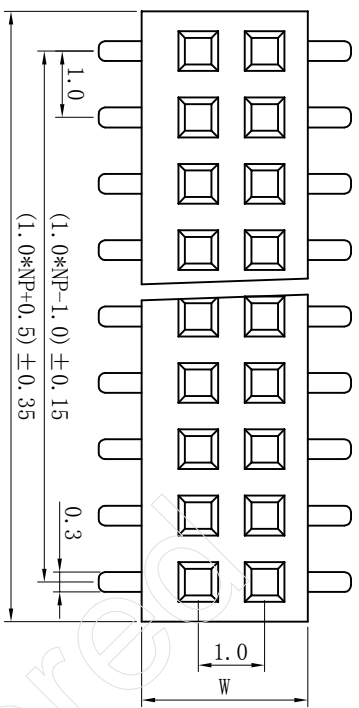


版本 REV	编号 ECON NO.	位置 LOCATIONS	变更内容 DESCR IPTION	日期 DATE	变更人 DESIGN
A0					

Specifications

1. Current Rating: 1Amps
2. Insulator Resistance: 5000 Megohms min.
3. Dielectric withstanding Voltage: AC 500V
4. Operating Temperature: -40°C to +105°C
5. Contact Material: phosphor Bronze
6. Insulator Material: Asfollows
7. Plated: Asfollows



PCB LAYOUT

TOLERANCE UNLESS OTHERWISE SPECIFIED	ANGLE
LINER	ANGLE
0 ± 0.3	0° ± 2.0°
.00 ± 0.2	.0° ± 1.0°
.000 ± 0.1	.00° ± 0.5°

品名 TITLE:		PHL 09H SMD双排柱排母		制图 (D):		日期 (Date):	
料号 (P/N):		审核 (CHKD):		审核 (CHKD):		日期 (Date):	
端子 (N/N):		核准 (APPD):		核准 (APPD):		日期 (Date):	
比例 (SCALE):		单位 (UNITED):		张数 (SHEET):		SIZE: A4	
1:1		mm		XOFX		类别 TYPE:	

深圳市永连旺电子有限公司